

Be **FAST**



# V3300

WORRY-FREE  
DIAGNOSTIC WHEEL ALIGNER

**JohnBean**

# THE FAST, FLEXIBLE WAY TO REV UP YOUR ALIGNMENT REVENUE.

Be **FAST**

Who needs more to worry about? We've designed a standalone, worry-free mobile wheel alignment system that is able to provide quick and accurate measurements to increase error-free repair services.

The V3300 alignment system will guide technicians of multiple skill levels through an accurate alignment in less time, reducing errors.

Its advanced notification system monitors the entire alignment procedure to automatically correct and compensate for simple issues without slowing you down, ensuring that every alignment is done on time.

If you are looking for a worry-free wheel aligner you can trust to be accurate while saving you time and increasing your revenue; the V3300 is your system of choice.

## SHIFT YOUR REPAIR BUSINESS INTO HIGH-GEAR WITH THE V3300.



3 YEARS WARRANTY

## STAY ON TRACK THROUGH EACH STEP NOTIFICATION SYSTEM

We call it "Compensate-Warn-Alert" but all you need to know is that the system will compensate almost any error made during the alignment. Whether it's due to suspension stress or loose components, **the V3300 will quickly find and correct errors** as they are made. If the system is unable to fix an error, the **technician will be notified** with the right instructions to fix it.

*The system measured an inconsistent rolling surface during compensation. Please check the rolling surface and perform compensation again.*





## RIDE HEIGHT MEASUREMENT

Measure the vehicle ride height to guarantee a proper adjustment. The V3300 offers multiple options for ride height measurement, depending on the vehicle type and manufacturer.



Eliminate manual data entry, speed up measuring, and increase accuracy using our specially designed, optional Ride Height Targets.



## FENDER TARGETS

No manual entry is required when using our ride height Fender Targets with easy suction cup attachment. Alignment specifications adjust automatically according to the ride height measurement.

## TARGET IMAGING POINTER (TIP)

Alternatively, the Target Imaging Pointer (TIP) measures ride height more accurately than manual measuring to obtain proper alignment specifications.

## VODI™

Guides the technician through the measurement process and reduces the amount of time spent walking back and forth from the vehicle to the aligner.



## INTEGRATED DRIVE-ON CAMERA

Creates a visual record of the vehicle that can be attached to the customer printout.

## AUTOMATIC VEHICLE HEIGHT TRACKING

The camera system follows the height of the vehicle, eliminating the need to adjust the aligner when you move the lift. Continuous third camera calibration provides accurate readings and reliable alignment results.

## OPTIONAL: AC200 UNIVERSAL WHEEL CLAMPS



## AC400 WHEEL CLAMPS

Clamp attaches to the tire with limited clamping force without touching the rim for a safe, fast and consistent placement every time.

## ADVANCED MEASUREMENTS

Measurements designed for advanced suspension troubleshooting and modified suspensions. Includes advanced ride height entry and SAI.

## CROSS DIMENSIONS

Values for frame verification are provided to confirm that the suspension is square.

## WHEELS OFF ADJUSTMENT

Remove the wheel and attach the target directly to a brake rotor for easier access to adjustment.

## OEM PROCEDURES

The software provides the OEM recommended workflow for accurate wheel alignment in the aftermarket segment.

## WHEEL DIAMETER

This measurement will notify the operator of potentially mismatched tires or excessive tread wear.

## EZ-TOE

Our advanced software makes it easy to quickly and accurately measure toe angle, allowing technicians to turn the wheel to access challenging adjustment points without using a steering wheel holder.

# INCREASE PROFITS THROUGH PRODUCTIVITY

WORK  
FAST

The fastest camera we have ever offered, the optimized software flow, and the built-in notification system work together to provide fast and accurate readings; allowing you to work quickly while maintaining confidence the results will be correct.

SAVE  
TIME

Saving time in the alignment means you can complete the repair faster and do more alignments a day — increasing your profits while improving customer satisfaction.

## SELL MORE ALIGNMENTS

We can help you explain what additional repairs are needed. With features like Audit Check, you can uncover alignment problems and pick up extra services with easy-to-read printouts in under a minute.

ADDITIONAL  
BUSINESS

Automatic alignment measurement printout includes:

- Track width
- Front and rear toe
- Camber
- Wheelbase
- Wheel diameter
- Cross dimensions

JohnBean



## IT'S FLEXIBLE!

The V3300 allows you to move around the shop and perform wheel alignments in any bay.

## IT'S CONVENIENT!

Perform alignment audit checks anywhere on the shop floor.

## IT'S COMPACT!

Integrated mobile base, folding beams and space-saving design make storage easier.





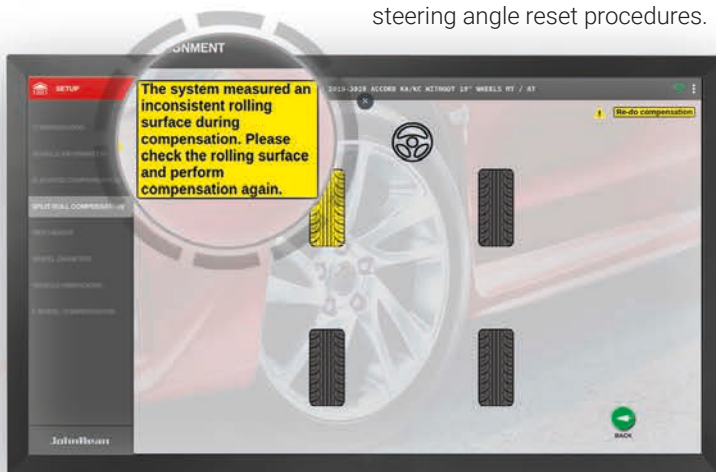
# GO BEYOND WHEEL ALIGNMENT

## EASY ACCESS TO CRITICAL INFORMATION

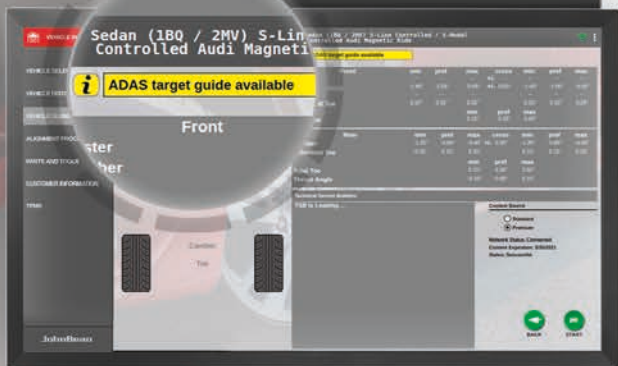
The V3300 allows instant access to real-time OEM repair information, TSBs, recalls, and TPMS reset procedures.

There will be no more concerns about ADAS (Advanced Driver Assistance Systems); the aligner will alert you when the vehicle includes ADAS features and will provide the proper procedure for adjustments and target placement.

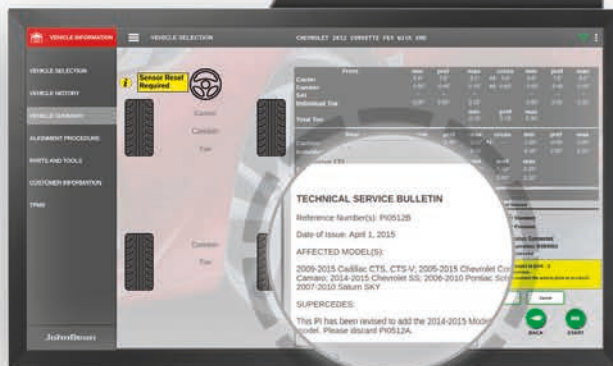
The system's online connectivity allows for software and vehicle specification database updates for your shop to support the latest in alignment specs, aftermarket parts replacement, and steering angle reset procedures.



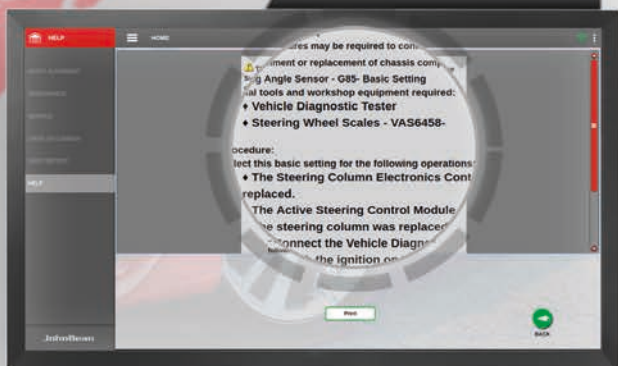
### ADAS SENSOR ALERT



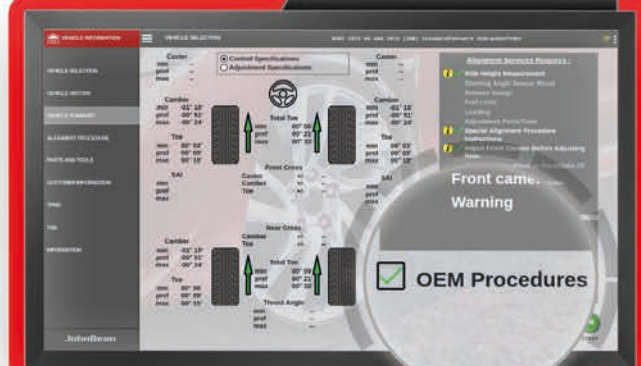
### TSB



### RESET PROCEDURES



### OEM REPAIR PROCEDURES





# PAIR YOUR WHEEL ALIGNER WITH THE NEW BEST-IN-CLASS ADAS CALIBRATION SYSTEM

Tru-Point™ delivers an integrated system that combines advanced camera technology, software design, and targets, putting ADAS recalibration on the fast track.

The system performs an alignment check of the vehicle before recalibration and monitors each step of the setup procedure, ensuring compliance with OEM safety specifications.

- *No manual measurements*
- *Proof of target placement*
- *Floor compensation*
- *Vehicle alignment check*
- *OEM compliant*

## TECHNICAL SPECIFICATIONS

Tire Diameter (AC400)	19"-39"   48-99cm
Track Width	48"-96"   122-244cm
Wheelbase	79"-180"   201-457cm
Power Supply	110-240V 50/60Hz

## STANDARD ACCESSORIES

- Wheel Clamps with XD Targets
- Wheel Chocks
- Steering Wheel Holder
- Brake Pedal Depressor
- Printer
- VIN Scanner

## WARRANTY

- **3 years** parts replacement
- **1 year** labor

**5**  
YEARS

**PEACE OF MIND  
WARRANTY PROGRAM**

Always be up-to-date and at the peak of accuracy

### PLATINUM

- Specifications
- Software Upgrades and Enhancements\*
- On-Site Service (Includes Parts & Labor)
- Annual Optimizations and Precision Adjustments

\*3 Updates/Year Installed by a Factory-Trained Professional

**PACKAGE  
SAVINGS!  
\$6,700**



800.362.4618  
UNITED STATES

800.362.4608  
CANADA

Snap-on Total Shop Solutions (TSS) offers a wide range of equipment solutions for workshops, garages, car dealers, and tire shops, thanks to the specific solutions provided by its portfolio of premium brands. As a brand of TSS, John Bean is committed to providing innovative and reliable wheel solutions to the auto repair industry. Therefore, specifications listed in this sell sheet may change without notice. ©2022 Snap-on Incorporated. John Bean is a trademark, registered in the United States and other countries, of Snap-on Incorporated. All rights reserved. All other marks are marks of their respective holders. sswa22041 (NA\_en) 08/2022

